

## STEP 1 – Windows Notification

Upon running the SetBilder.exe install program you may, depending on your version of Windows, see the following notification from Microsoft.



Here you will need to click on the “More Info” and then select “Install Anyway”. This notification simply informs you that Microsoft does not recognize SetBilder as a widely known Software Developer.



Once the install has completed the following files will have been copied onto your Windows desktop:

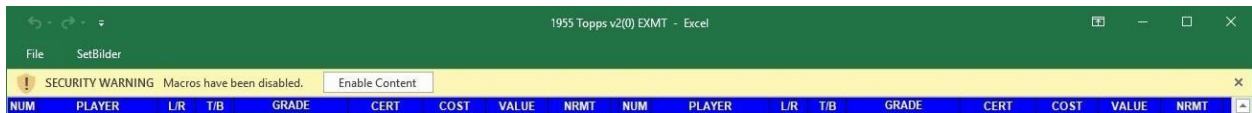
- This Quick Start Guide.
- The full SetBilder User Guide.
- The Master Workbook Folder.

Additionally, the Price Guide File for your version will have been installed on the root of your C: Drive in the Folder named "SetBilder".

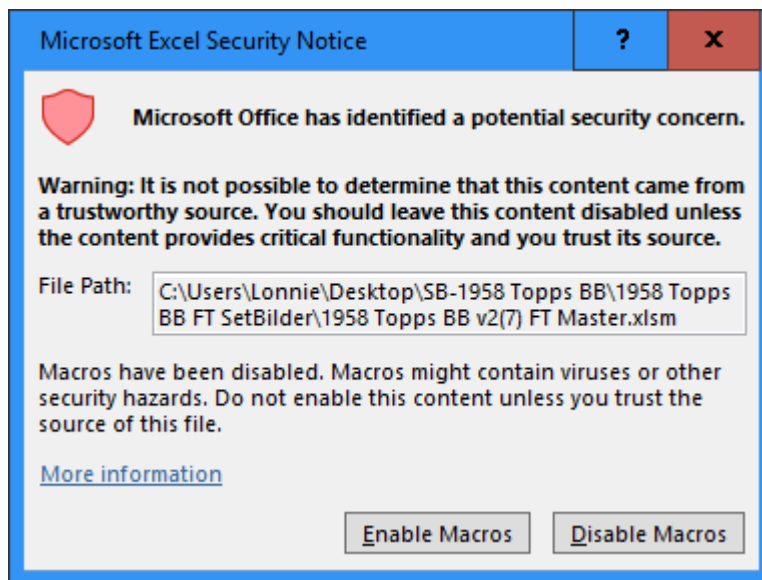
## STEP 2 – Enable Content or Macros

Upon opening your SetBilder Master File, located in the SetBilder Folder on your Desktop, you could see one of the following "Security Warning" notifications depending on the Excel and/or Windows version you are using. These are normal notices alerting you to the fact that SetBilder has underlying programming and is not a regular Excel Workbook.

The 1<sup>st</sup> version as shown below is the most common of the two and you will need to click on "Enable Content" to allow SetBilder to run.



The 2<sup>nd</sup> version as shown below is less common but basically appears for the same reason - alerting you to the fact that SetBilder has underlying programming and is not a regular Excel Workbook. You will need to click on "Enable Macros" to allow SetBilder to run.



In either case - this will need to be done the 1<sup>st</sup> time (only) that you open a new workbook or a copy of an existing workbook.

### STEP 3 – Verify that the Price Guide File is Working

Once you have Enabled Content – you should see that the “NRMT” columns are populated with values from the Price Guide File. This column provides a quick reference for the approximate NRMT values of each card in the set.

NUM	PLAYER	L/R	T/B	GRADE	CERT	COST	VALUE	NRMT	NUM	PLAYER	L/R	T/B	GRADE	CERT	COST	VALUE	NRMT
1	Dusty Rhodes			NEED				100.00	36	Leo Kiely			NEED				38.00
2	Ted Williams <sup>HOF</sup>			NEED				585.00	37	Joe Cunningham <sup>RC</sup>			NEED				30.00
3	Art Fowler			NEED				45.00	38	Bob Turley			NEED				35.00
4	Al Kaline <sup>HOF</sup>			NEED				160.00	39	Bill Glynn			NEED				35.00
5	Jim Gilliam			NEED				70.00	40	Don Hoak			NEED				40.00
6	Stan Hack			NEED				40.00	41	Chuck Stobbs			NEED				30.00
7	Jim Hegan			NEED				85.00	42	Windy McCall			NEED				30.00
8	Hal Smith			NEED				40.00	43	Harvey Haddix			NEED				30.00
9	Bob Miller			NEED				30.00	44	Corky Valentine			NEED				30.00
10	Bob Keegan			NEED				45.00	45	Hank Sauer			NEED				45.00
11	Ferris Fain			NEED				35.00	46	Ted Kazanski			NEED				30.00
12	Jake Thies			NEED				30.00	47	Hank Aaron <sup>HOF</sup>			NEED				550.00
13	Fred Marsh			NEED				30.00	48	Bob Kennedy			NEED				30.00
14	Jim Finigan			NEED				30.00	49	JW Porter			NEED				40.00
15	Jim Pendleton			NEED				30.00	50	Jackie Robinson <sup>HOF</sup>			NEED				450.00
16	Roy Sievers			NEED				35.00	51	Jim Hughes			NEED				30.00
17	Bobby Hofman			NEED				30.00	52	Bill Tremel			NEED				30.00
18	Russ Kemmerer			NEED				35.00	53	Bill Taylor			NEED				30.00
19	Billy Herman <sup>HOF</sup>			NEED				65.00	54	Lou Limmer			NEED				30.00
20	Andy Carey			NEED				65.00	55	Rip Repulski			NEED				30.00
21	Alex Grammas			NEED				30.00	56	Ray Jablonski			NEED				30.00
22	Bill Skowron			NEED				45.00	57	Billy Odell			NEED				40.00
23	Jack Parks			NEED				40.00	58	Jim Rivera			NEED				40.00
24	Hal Newhouser <sup>HOF</sup>			NEED				85.00	59	Gair Allie			NEED				30.00
25	Johnny Podres			NEED				85.00	60	Dean Stone			NEED				30.00
26	Dick Groat			NEED				75.00	61	Spook Jacobs			NEED				30.00
27	Billy Gardner <sup>RC</sup>			NEED				30.00	62	Thornton Kipper			NEED				30.00
28	Ernie Banks <sup>HOF</sup>			NEED				230.00	63	Joe Collins			NEED				65.00
29	Herman Wehmeier			NEED				30.00	64	Gus Triandos <sup>RC</sup>			NEED				35.00
30	Vic Power			NEED				40.00	65	Ray Boone			NEED				40.00
31	Warren Spahn <sup>HOF</sup>			NEED				150.00	66	Ron Jackson <sup>RC</sup>			NEED				35.00
32	Ed McGhee			NEED				40.00	67	Wally Moon			NEED				35.00
33	Tom Qualters			NEED				40.00	68	Jim Davis			NEED				30.00
34	Wayne Terwilliger			NEED				38.00	69	Ed Bailey			NEED				30.00
35	Dave Jolly			NEED				30.00	70	Al Rosen			NEED				45.00

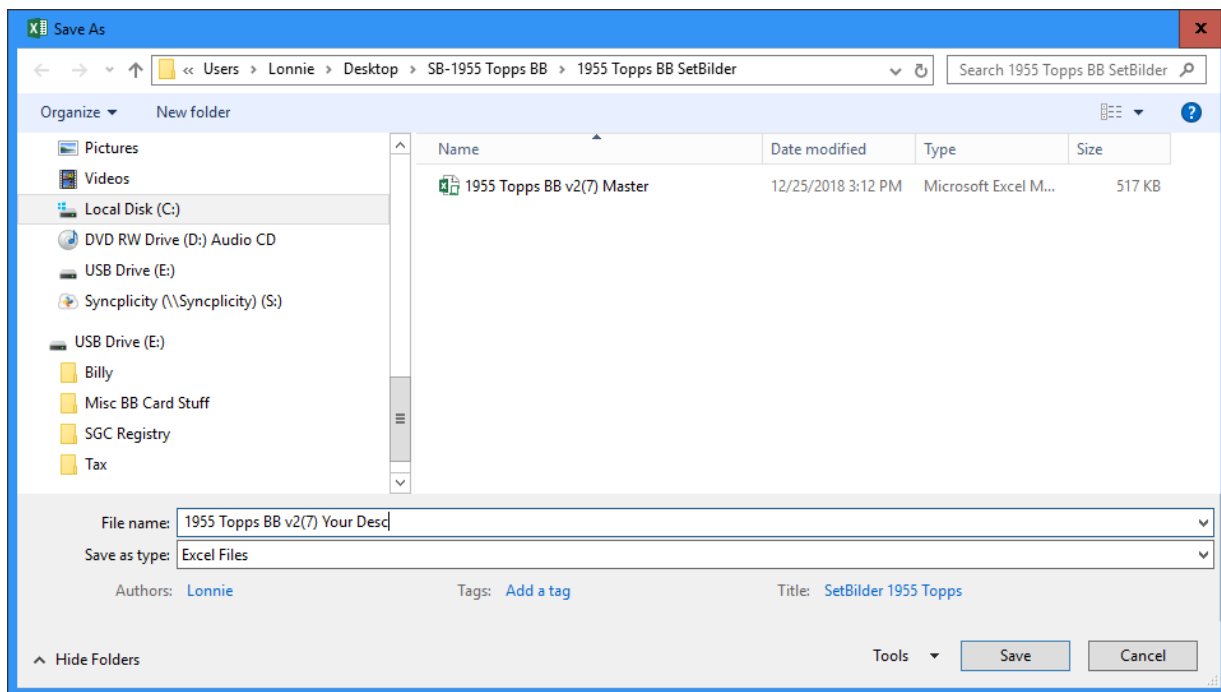
### STEP 4 – Create a Working Set

You will need to keep the original “SetBuilder Master” workbook intact as any additional Working Sets or Version Updates will be created/processed using the Master Workbook. At least one “Working Set” version needs to be created to begin tracking your set building progress.

From the Master Workbook, click on the SetBuilder Menu and choose “Save This Set As” to save a “Working Set” copy of the SetBuilder Master.

NUM	PLAYER	L/R	T/B	GRADE	CERT	COST	VALUE	NRMT
1	Dusty Rhodes			NEED				100.00
2	Ted Williams <sup>HOF</sup>			NEED				585.00
3	Art Fowler			NEED				45.00
4	Al Kaline <sup>HOF</sup>			NEED				160.00
5	Jim Gilliam			NEED				70.00
6	Stan Hack			NEED				40.00
7	Jim Hegan			NEED				85.00
8	Hal Smith			NEED				40.00
9	Bob Miller			NEED				30.00
10	Bob Keegan			NEED				45.00

You will be presented with a Save As Dialog box that provides a suggested file name consisting of the Set Year, Card Company, Version Number and “Your Desc” (i.e.) “1955 Topps BB v2(7) Your Desc”



Change the “Your Desc” part of the File Name to something that identifies the type of set you will be building. (i.e. Primary, 2ndary, EXMT, NRMT, etc.) and then click “Save”.

Create as many Working Set versions of the Master as you need to accommodate the number of same set projects that you want to track keeping in mind that:

- There is no limit to the number of Working Set versions that you can create.
- Additional Working Set versions can be created any time that you want.
- All that is required to get started is one Working Set copy of the SetBilder Master.

You are now ready to go so feel free to start exploring by opening your Working Set workbook.

The basic functionality of SetBilder is very intuitive:

- There are 2 large columns consisting of 35 Cards per column framed in each SetBilder window.
- Frames are controlled by clicking in the bottom scroll bar area to advance or retreat.
- Entering individual card data is initiated by clicking on “NEED” and then selecting a Grade from the Drop-Down list.
- By selecting a Grade, you will see that the Price Guide value for that card, in the selected grade, is displayed in the Value column.
- You can now select centering values, enter a cost, and enter a slab certification number, if applicable.

#### A Note on SetBilder Price Guides:

- The SetBilder installer will install the version of the Price Guide that was current at the time of the install program creation.
- Centered at the bottom of the Summary & Statistics page of your SetBilder Workbook you will see the currently installed version of your Price Guide.
- As Price Guide versions are updated every 3 to 4 months you may not have the most current version.
- Price Guide Updates are free of charge and can be downloaded on the “Versions” page of the SetBilder Website - [SetBilder PG Updates](#)
- Once you have downloaded the newer version of your Price Guide - Use the “Update Price Guide Version” function from any SetBilder Menu to import the new Price Guide data.

See the full SetBilder User Guide for detailed information on all functionality features.