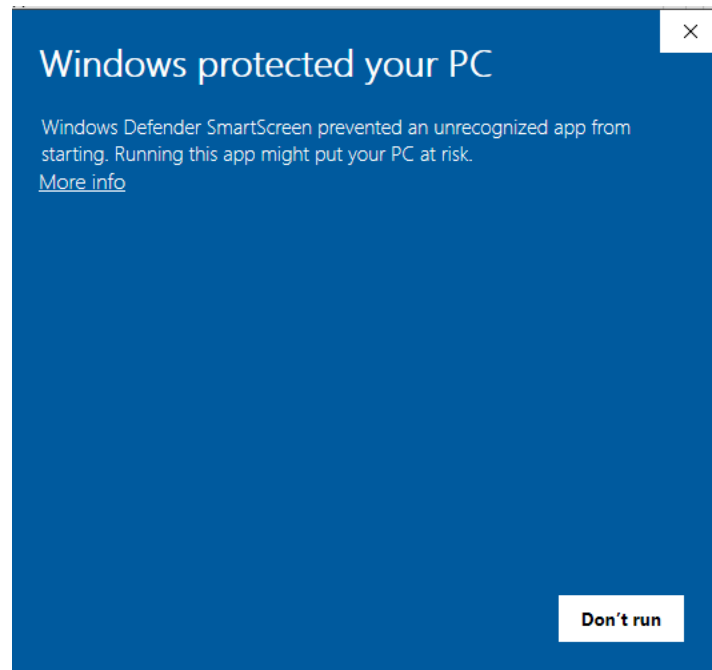


Double Clicking on the SetBilder Setup Icon initiates the automated install for SetBilder. Note that during the install process - Windows 10 users running Windows Defender Antivirus may see the following screen:



If so – Click on the “More Info” link and you will be asked to verify that you want to continue the install.

Once the install has completed the following files will have been copied onto your Windows desktop:

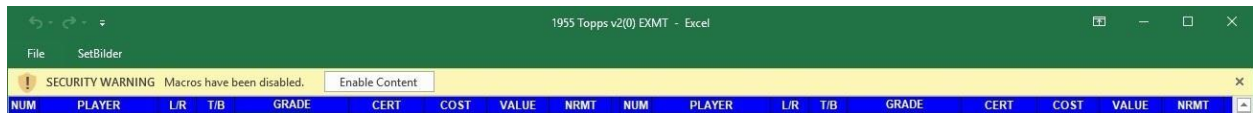
- This Quick Start Guide.
- The full SetBilder User Guide.
- The Master Workbook Folder.

Additionally, the Price Guide File for your version will have been installed on the root of your C: Drive in the Folder named “SetBilder”.

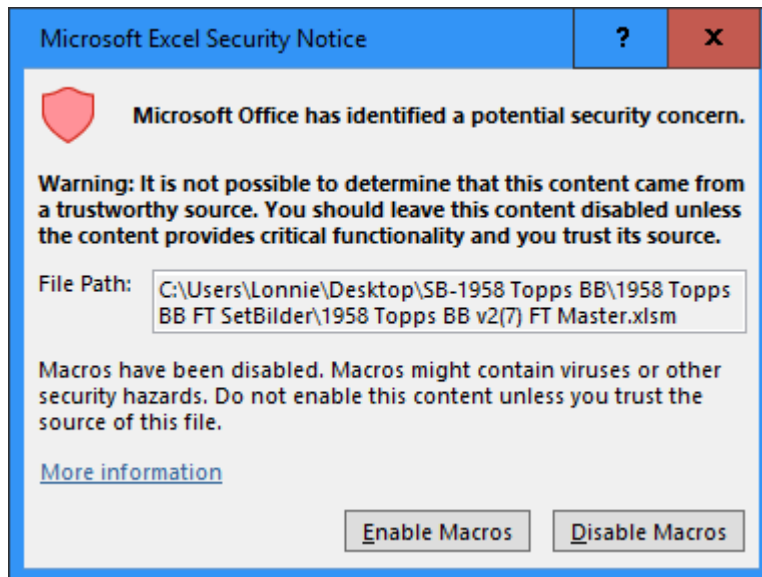
STEP 1 – Enable Content or Macros

Upon opening the SetBilder Master, located in the SetBilder Folder on your Desktop, you could see one of the following “Security Warning” notifications depending on the Excel and/or Windows version you are using. These are normal notices alerting you to the fact that SetBilder has underlying programming and is not a regular Excel Workbook.

The 1st version as shown below is the most common of the two and you will need to click on “Enable Content” to allow SetBilder to run.

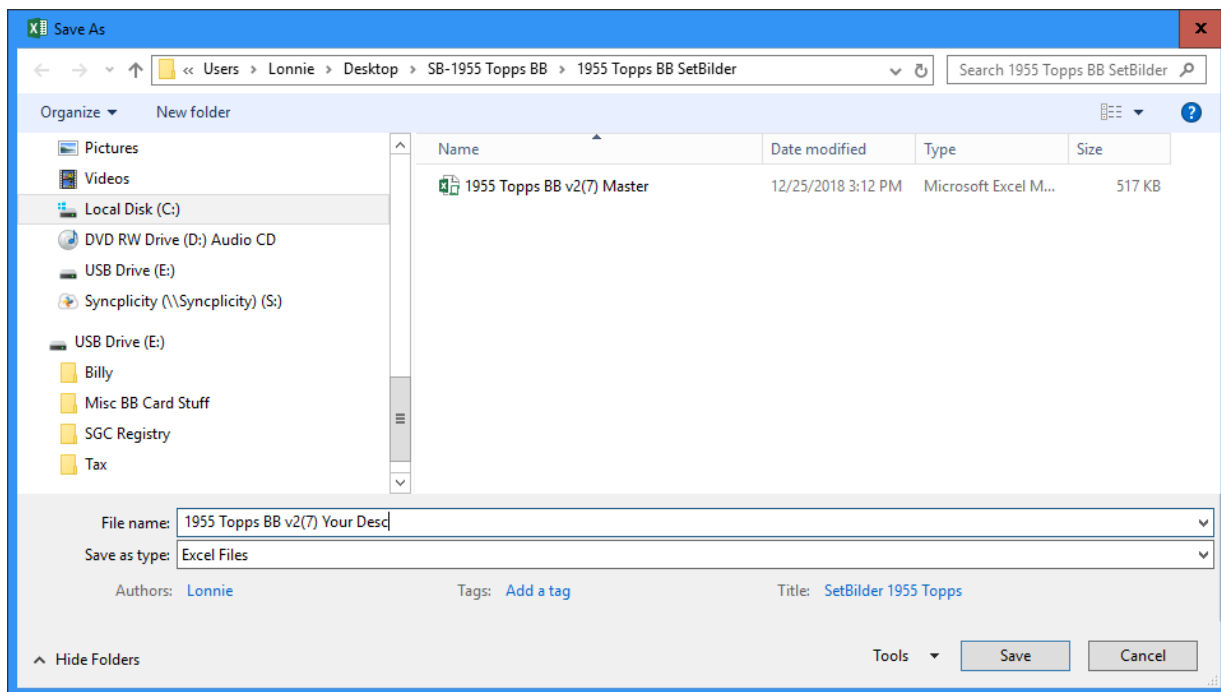


The 2nd version as shown below is less common but basically appears for the same reason - alerting you to the fact that SetBilder has underlying programming and is not a regular Excel Workbook. You will need to click on “Enable Macros” to allow SetBilder to run.



In either case - this will need to be done the 1st time (only) that you open a new workbook or a copy of an existing workbook.

You will be presented with a Save As Dialog box that provides a suggested file name consisting of the Set Year, Card Company, Version Number and “Your Desc” (i.e.) “1955 Topps BB v2(7) Your Desc”



Change the “Your Desc” part of the File Name to something that identifies the type of set you will be building. (i.e. Primary, 2ndary, EXMT, NRMT, etc.) and then click “Save”.

Create as many Working Set versions of the Master as you need to accommodate the number of same set projects that you want to track keeping in mind that:

- There is no limit to the number of Working Set versions that you can create.
- Additional Working Set versions can be created any time that you want.
- All that is required to get started is one Working Set copy of the SetBilder Master.

You are now ready to go so feel free to start exploring by opening your Working Set workbook.

The basic functionality of SetBilder is very intuitive:

- There are 2 Columns of 35 Cards framed in each SetBilder window.
- Frames are controlled by clicking in the bottom scroll bar area to advance or retreat.
- Entering individual card data is initiated by clicking on “NEED” and then selecting a Grade from the Drop-Down list.
- By selecting a Grade, you will see that the Price Guide value for that card, in the selected grade, is displayed in the Value column.
- You can now select centering values, enter a cost, and enter a slab certification number, if applicable.

A Note on SetBilder Price Guides:

- The SetBilder installer will install the version of the Price Guide that was current at the time of the program upload to the website.
- Centered at the bottom of the Summary & Statistics page of your SetBilder Set you will see the currently installed version of your Price Guide.
- As Price Guide versions are updated every 3 to 4 months you may not have the most current version.
- Price Guide Updates are free of charge and can be downloaded on the “Versions” page of the SetBilder Website - [SetBilder PG Updates](#)
- Once downloaded (I suggest downloading to your Windows Desktop) - Use the “Update Price Guide Version” function from any SetBilder Menu to import the new Price Guide data.

See the full SetBilder User Guide for detailed information on all functionality features.